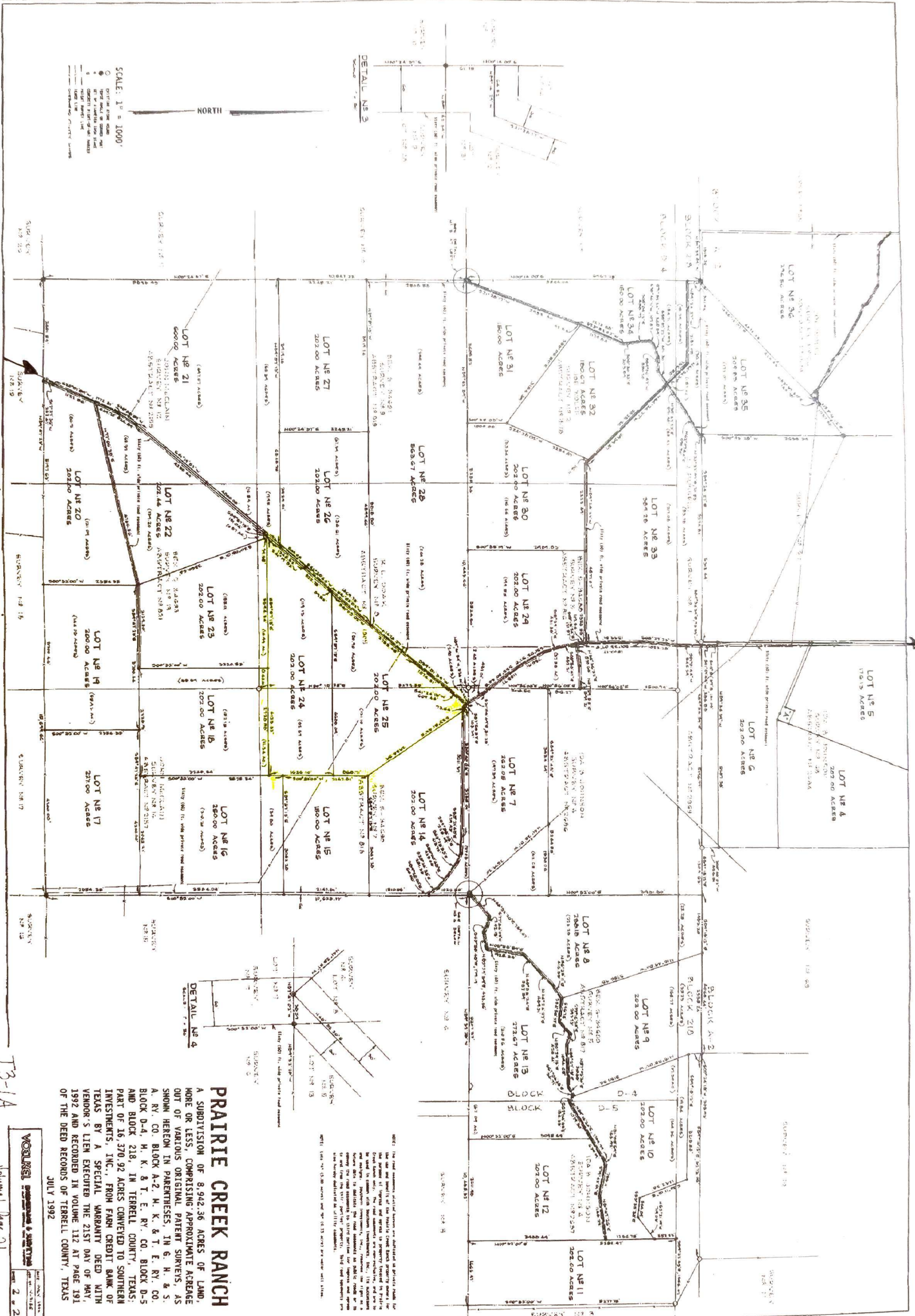


2.5 MILES TO HWY 90



PRAIRIE CREEK RANCH

A SUBDIVISION OF 8,942.36 ACRES OF LAND, MORE OR LESS, COMPRISING APPROXIMATE ACREAGE OUT OF VARIOUS ORIGINAL PATENT SURVEYS, AS SHOWN HEREON IN PARENTHESES, IN 6, N. & S. A. BY CO. BLOCK A-2, M. K. & T. E. BY CO. BLOCK D-4, M. K. & T. E. BY CO. BLOCK D-5 AND BLOCK 218, IN TERRELL COUNTY, TEXAS. PART OF 16,370.92 ACRES CONVEYED TO SOUTHERN INVESTMENTS, INC., FROM FARM CREDIT BANK OF TEXAS BY A SPECIAL WARRANTY DEED WITH VENDOR'S LIEN EXECUTED THE 21ST DAY OF MAY, 1992 AND RECORDED IN VOLUME 112 AT PAGE 191 OF THE DEED RECORDS OF TERRELL COUNTY, TEXAS

JULY 1992

HARRISON RANCH GATE

T3-14

Volume Page 31

VOUGHEL ENGINEERS & SURVEYORS	DATE: 07/1992
1000 W. 11th St., Suite 100, Amarillo, TX 79102	SCALE: 1" = 1000'
PHONE: 806/335-1111	SHEET: 2 OF 2