

SPRING CREEK ESTATES

Lot Price List

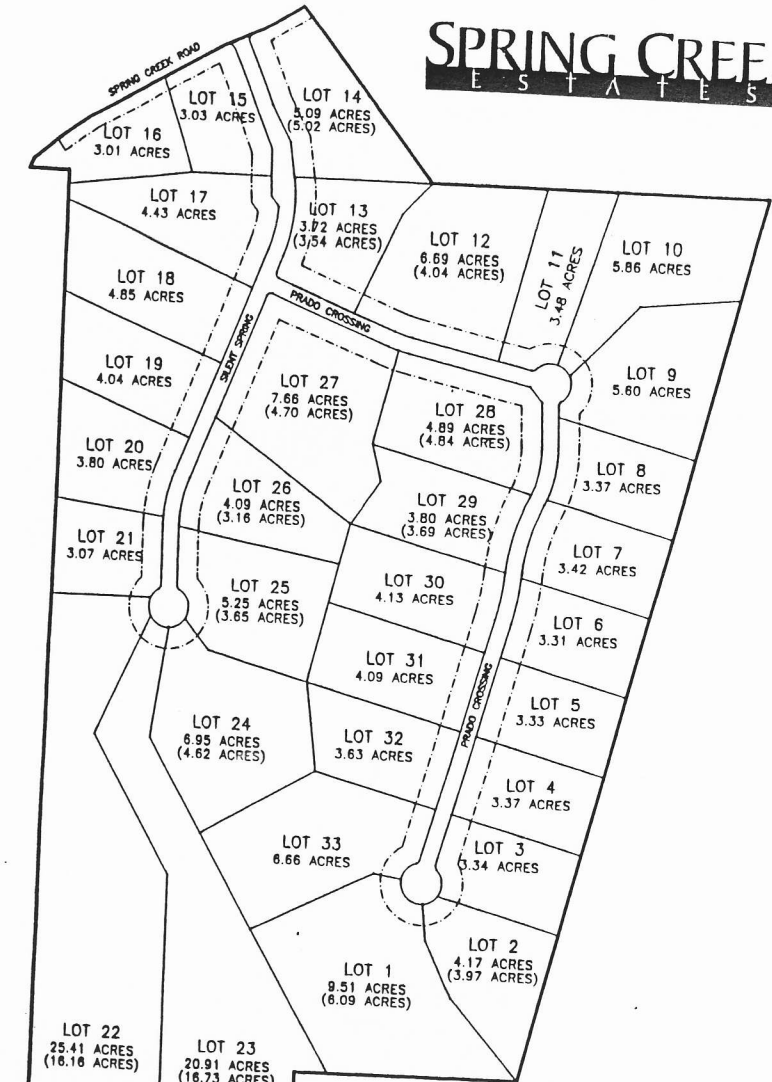
4/14/2004

Lot #	Acreage	Price	Features
1	9.07		
2	4.17		Fishing Tank
3	3.34	\$ 104,500.00	Water Well
4	3.37		Water Well
5	3.33		
6	3.31		
7	3.42		
8	3.37		
9	5.6		
10	5.86		
11	3.48		Elev. 1595'
12	6.69		
13	3.72		Fishing Tank
14	5.04		
15	3.01		
16	3.01		
17	4.37	\$ 98,300.00	
18	4.85		Water Well & Storage Tank
19	4.04		Elev. 1560'
20	3.8		
21	3.07		
22	25.41		
23	20.91		Ag. Exemption
24	6.95		Ag. Exemption
25	5.25		
26	4.09		
27	7.66		
28	4.89	\$ 122,250.00	Fishing Tank
29	3.8		
30	4.13	\$ 95,400.00	Fishing Tank
31	4.09		
32	3.63		
33	7.1		Homestead & Barn

For more information call:
 Craig Campbell
 Spring Creek Sales Office
 (830) 249-1852
 (210) 885-9610

Lot prices and sizes are subject to change without notice.
 Please contact the sales office for current lot prices and sizes.

SPRING CREEK ESTATES



- Beautifully wooded 3 to 25 acre lots.
- Dramatic views overlooking the hill country.
- Preferred Boerne School District.
- Low Kendall County taxes.
- Close to Boerne City Limits.

For more information call:
 (830) 249-1852

Lot prices and sizes subject to change without notice.