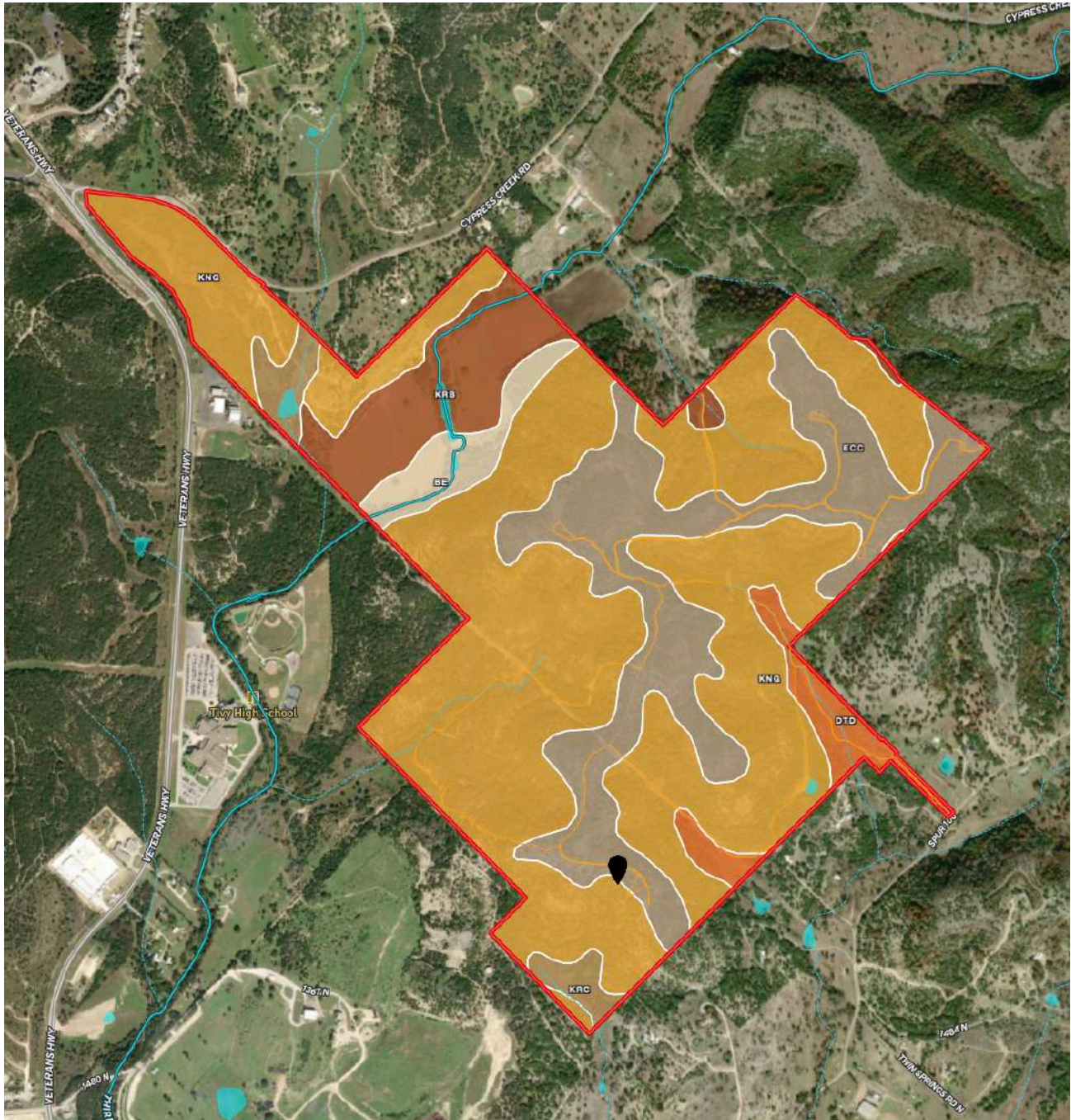


THIRD CREEK RANCH

697 Acres | Kerr County



KrC	Krum silty clay, 3 to 5 percent slopes	18.1	2.6%	3e	?	KNG	Kerrville-Real association, 8 to 30 percent slopes	427.3	61%	7s	?
DTD	Doss-Kerrville association, undulating	24.5	3.5%	4e	?	KrB	Krum silty clay, 1 to 3 percent slopes	57.2	8.2%	2e	?
Be	Boerne fine sandy loam, 0 to 3 percent slopes, occasionally flooded	22	3.1%	3s	?	ECC	Eckrant-Comfort association, 1 to 8 percent slopes	151	21.6%	7s	?

Anthony Simpson-Broker
 Anthony@SimpsonRanches.com
 SimpsonRanches.com



Cell: 210.854.6365
 Office: 830.955.1725