

INDIAN CREEK RANCH

Wm. Rainey Subdivision of 53.33 Ac of the Gilley Survey
& 382.83 Ac. of the Scurlock Survey Deeded to him
in Vol 137, page 770, D/R, Coryell County, Texas.

THE STATE OF TEXAS
COUNTY OF CORYELL

The Commissioners Court of Coryell County, Texas,
after having examined the Plat and Subdivision out of the Scurlock
& Gilley Survey, known as the Indian Creek Ranch Subdivision
do authorize and approve same

Done this the 22 day of October 1979

Douglas H. Smith
Douglas H. Smith, Judge of the
Commissioners Court

Filed for record 22 day of October at 11:00 o'clock A.M.
Recorded 22 day of October 1979 at 10:30 o'clock A.M.

Sublet Stephens
County Clerk, Coryell County, Tx

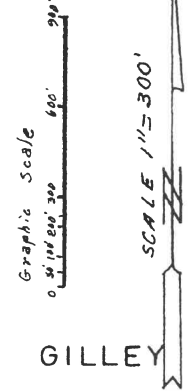
Recorded in Vol 4 page 19 of the
Plat Records of Coryell County, Texas

WM. SCURLOCK SURVEY

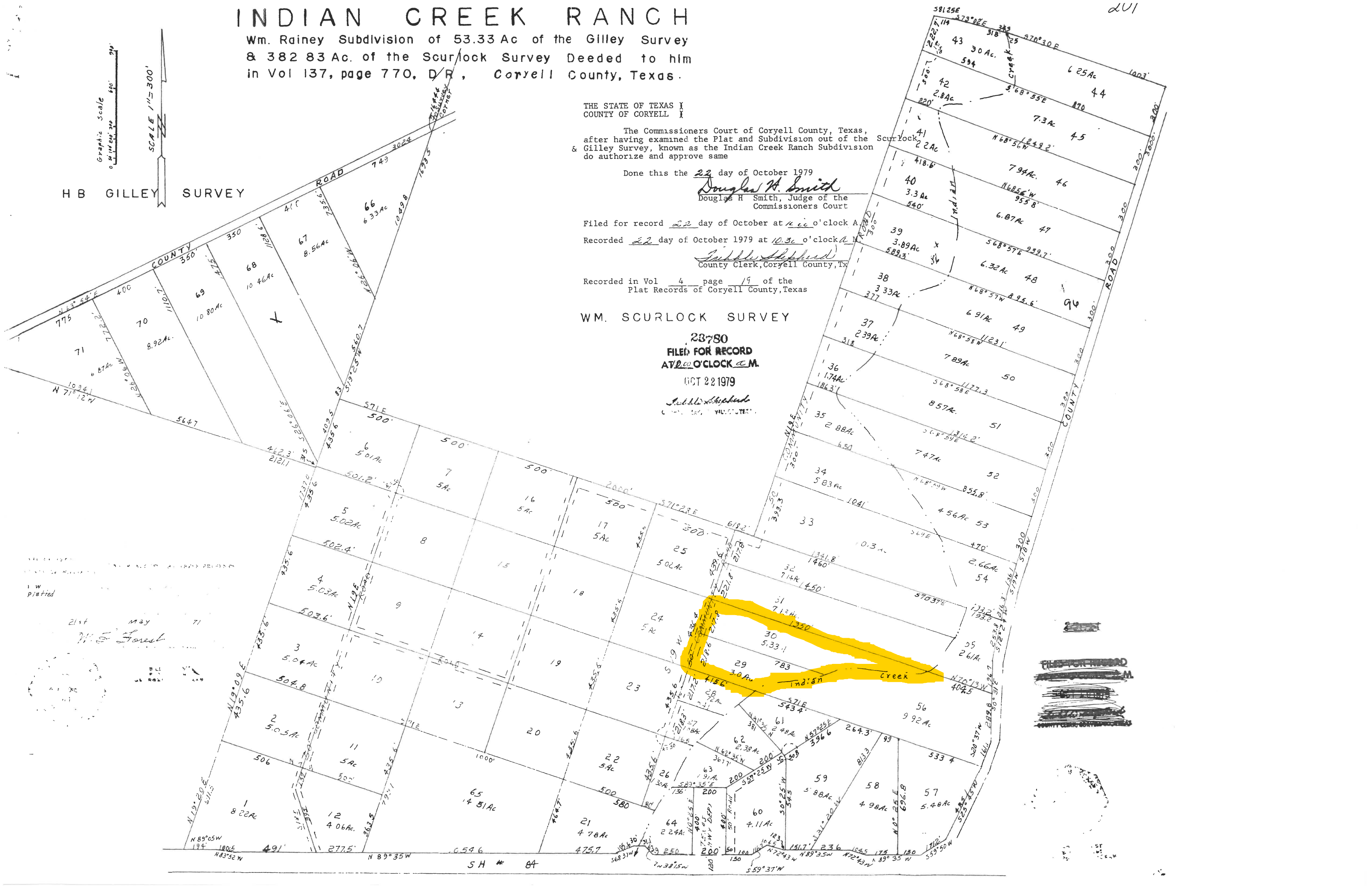
23780
FILED FOR RECORD
AT 10:00 O'CLOCK A.M.

OCT 22 1979

Sublet Stephens
County Clerk, Coryell County, Texas



H B GILLEY SURVEY



~~THE STATE OF TEXAS~~
~~COUNTY OF CORYELL~~
~~...~~