

# INDIAN CREEK RANCH

Wm. Rainey Subdivision of 53.33 Ac of the Gilley Survey  
& 382.83 Ac. of the Scurlock Survey Deeded to him  
in Vol 137, page 770, D/R, Coryell County, Texas.

THE STATE OF TEXAS  
COUNTY OF CORYELL

The Commissioners Court of Coryell County, Texas,  
after having examined the Plat and Subdivision out of the Scurlock  
& Gilley Survey, known as the Indian Creek Ranch Subdivision  
do authorize and approve same

Done this the 22 day of October 1979

*Douglas H. Smith*  
Douglas H. Smith, Judge of the  
Commissioners Court

Filed for record 22 day of October at 11:00 o'clock A.M.  
Recorded 22 day of October 1979 at 10:30 o'clock A.M.

*Sublet Stephens*  
County Clerk, Coryell County, Tx

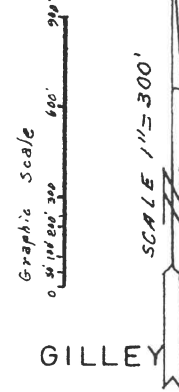
Recorded in Vol 4 page 19 of the  
Plat Records of Coryell County, Texas

WM. SCURLOCK SURVEY

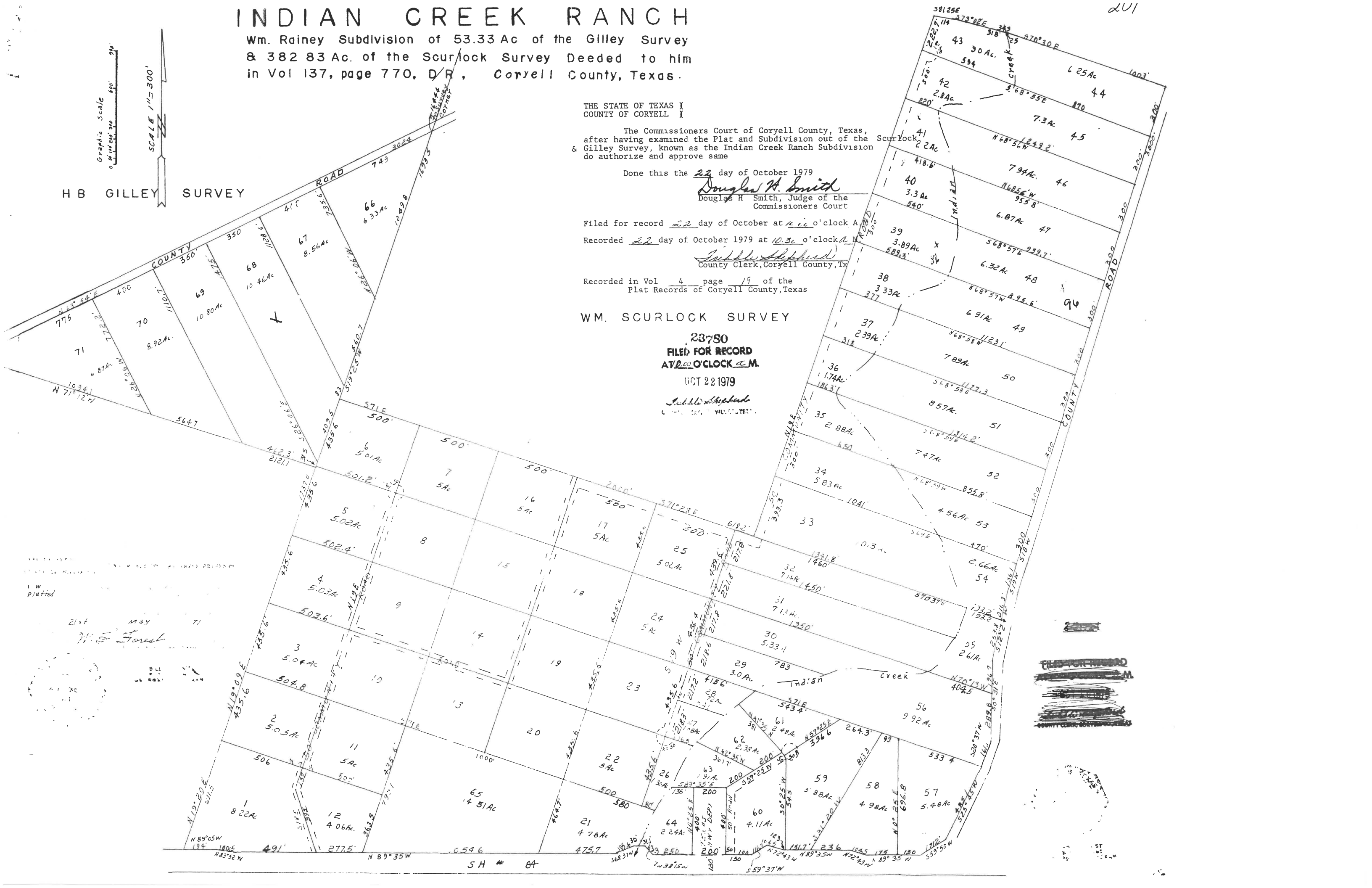
23780  
FILED FOR RECORD  
AT 10:00 O'CLOCK A.M.

OCT 22 1979

*Sublet Stephens*  
County Clerk, Coryell County, Texas



H B GILLEY SURVEY



21st May 71  
W. S. Forest

~~THE STATE OF TEXAS~~  
~~COUNTY OF CORYELL~~  
~~...~~

201