

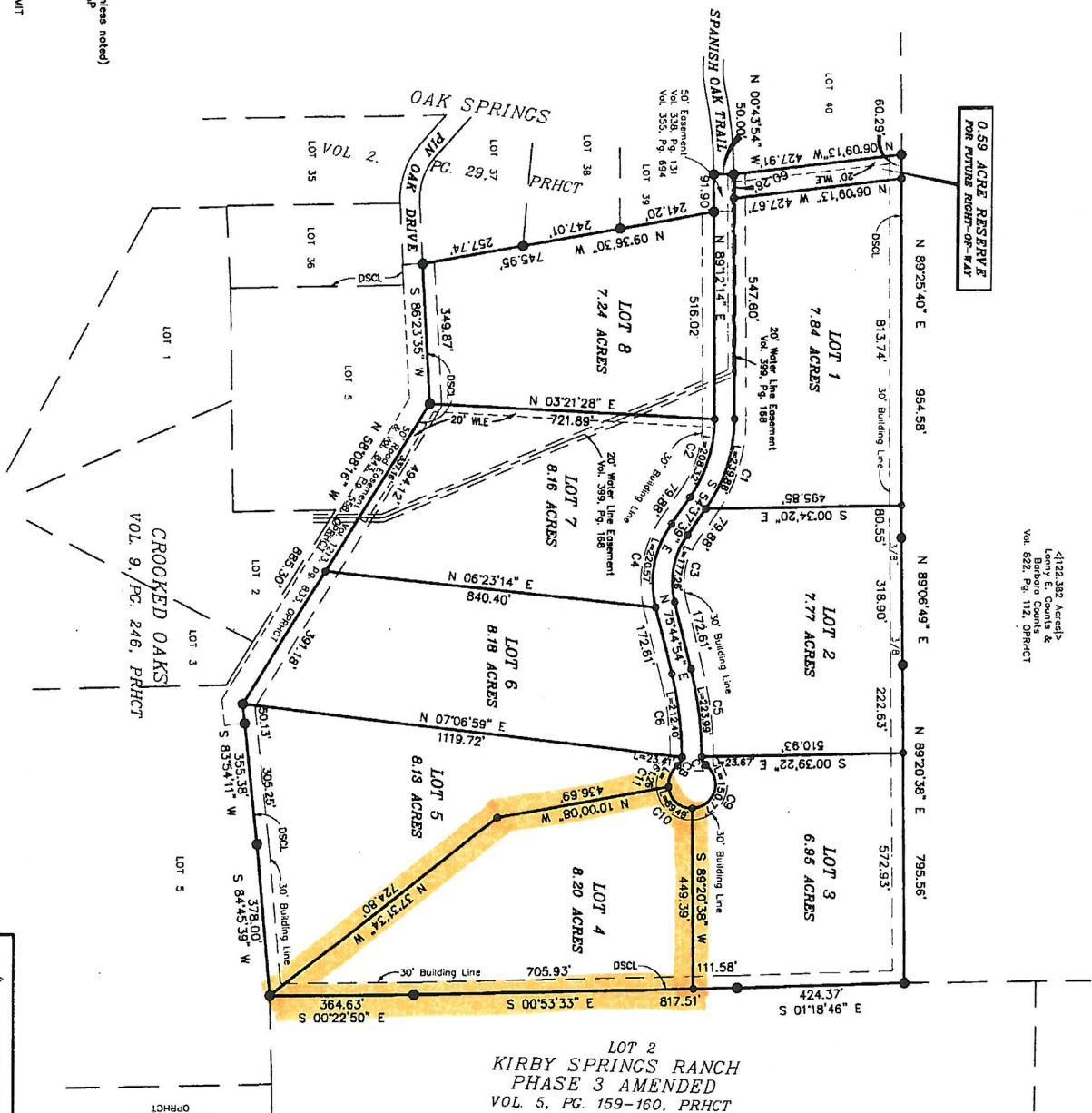
NORTH
RBF BEARING: WSC-84

770 SPANISH OAK TRAIL

Vol: 12 Pg 385

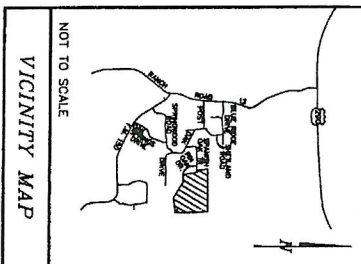
- LEGEND**
- 1/2" IRON ROD FOUND (unless noted)
 - 5/8" IRON ROD SET W/CAP
 - OVERHEAD UTILITY WIRE
 - UTILITY POLE
 - GUY WIRE
 - WATER VALVE
 - DRIPPING SPRINGS CITY LIMIT
 - WATERLINE EASEMENT

SHEET 1 OF 2



4122.382 Acres
Lenny E. Counts &
Vol. 822 Pg. 112, PRHCT

175.50 Acres
Vol. 1014 Pg. 446
DRHCHT



<p>C1</p> <p>Δ = 3610'07"</p> <p>R = 350.00"</p> <p>L = 239.88"</p> <p>CB = S 72°42'43" E</p> <p>C = 235.92"</p>	<p>C2</p> <p>Δ = 3610'07"</p> <p>R = 330.00"</p> <p>L = 208.32"</p> <p>CB = S 72°42'43" E</p> <p>C = 204.87"</p>
<p>C3</p> <p>Δ = 4937'27"</p> <p>R = 204.67"</p> <p>L = 177.26"</p> <p>CB = S 79°26'23" E</p> <p>C = 171.77"</p>	<p>C4</p> <p>Δ = 4937'27"</p> <p>R = 254.67"</p> <p>L = 220.57"</p> <p>CB = S 79°26'23" E</p> <p>C = 213.74"</p>
<p>C5</p> <p>Δ = 135°22'28"</p> <p>R = 925.00"</p> <p>L = 223.99"</p> <p>CB = N 82°41'08" E</p> <p>C = 223.45"</p>	<p>C6</p> <p>Δ = 135°43'30"</p> <p>R = 875.00"</p> <p>L = 212.40"</p> <p>CB = N 82°41'08" E</p> <p>C = 211.88"</p>
<p>C7</p> <p>Δ = 54°15'33"</p> <p>R = 258.00"</p> <p>L = 23.87"</p> <p>CB = N 82°29'40" E</p> <p>C = 22.80"</p>	<p>C8</p> <p>Δ = 53°38'41"</p> <p>R = 253.00"</p> <p>L = 23.41"</p> <p>CB = N 82°31'16" E</p> <p>C = 22.58"</p>
<p>C9</p> <p>Δ = 143°58'19"</p> <p>R = 60.00"</p> <p>L = 150.77"</p> <p>CB = S 72°38'42" E</p> <p>C = 114.12"</p>	<p>C10</p> <p>Δ = 85°27'40"</p> <p>R = 60.00"</p> <p>L = 89.49"</p> <p>CB = N 42°04'28" E</p> <p>C = 81.43"</p>
<p>C11</p> <p>Δ = 58°29'47"</p> <p>R = 60.00"</p> <p>L = 61.26"</p> <p>CB = S 65°56'48" E</p> <p>C = 58.63"</p>	

STAUDT SURVEYING, INC.

Thomas E. Staudt
P.O. Box 1273
Dripping Springs, TX 78620
(512) 938-2256

SUBDIVISION PLAT OF

LAS MADERAS

HAYS COUNTY, TEXAS

Scale: 1" = 100'

DATE: MAY 2004

PLAT # 504098

DR. BY: IES

PLAT # 504098

DATE: MAY 2004

PLAT # 504098