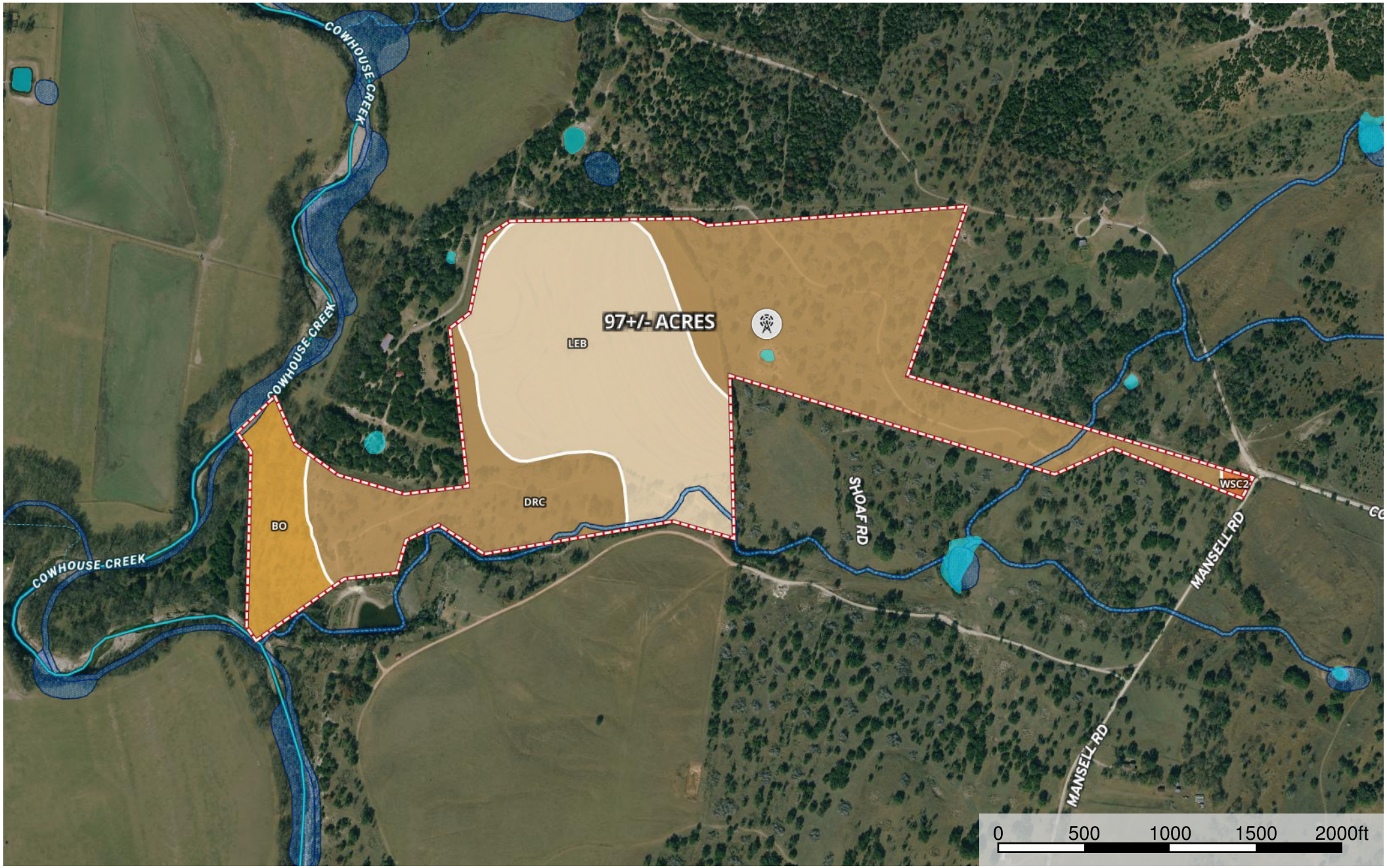


# Heavin - 97+/- Acres

Coryell County, Texas, 97 AC +/-



- Photo Point
- Windmill
- Boundary
- Wetlands
- Riparian
- Stream, Intermittent
- River/Creek
- Water Body

|  Boundary 89.6 ac









SOIL CODE	SOIL DESCRIPTION	ACRES	%	CAP
DrC	Doss-Real complex, 1 to 8 percent slopes	49.1	54.86	6e
WsC2	Wise clay loam, 3 to 5 percent slopes, moderately eroded	0.3	0.37	3e
LeB	Lewisville clay loam, 1 to 3 percent slopes	32.7	36.55	2e
Bo	Bosque clay loam, 0 to 1 percent slopes, rarely flooded	7.4	8.22	1
TOTALS		89.6	100%	4.12

### Capability Legend

Increased Limitations and Hazards

Decreased Adaptability and Freedom of Choice Users

Land, Capability

								
	1	2	3	4	5	6	7	8
'Wild Life'	•	•	•	•	•	•	•	•
Forestry	•	•	•	•	•	•	•	
Limited	•	•	•	•	•	•	•	
Moderate	•	•	•	•	•	•		
Intense	•	•	•	•	•			
Limited	•	•	•	•				
Moderate	•	•	•					
Intense	•	•						
Very Intense	•							

### Grazing Cultivation

(c) climatic limitations (e) susceptibility to erosion

(s) soil limitations within the rooting zone (w) excess of water