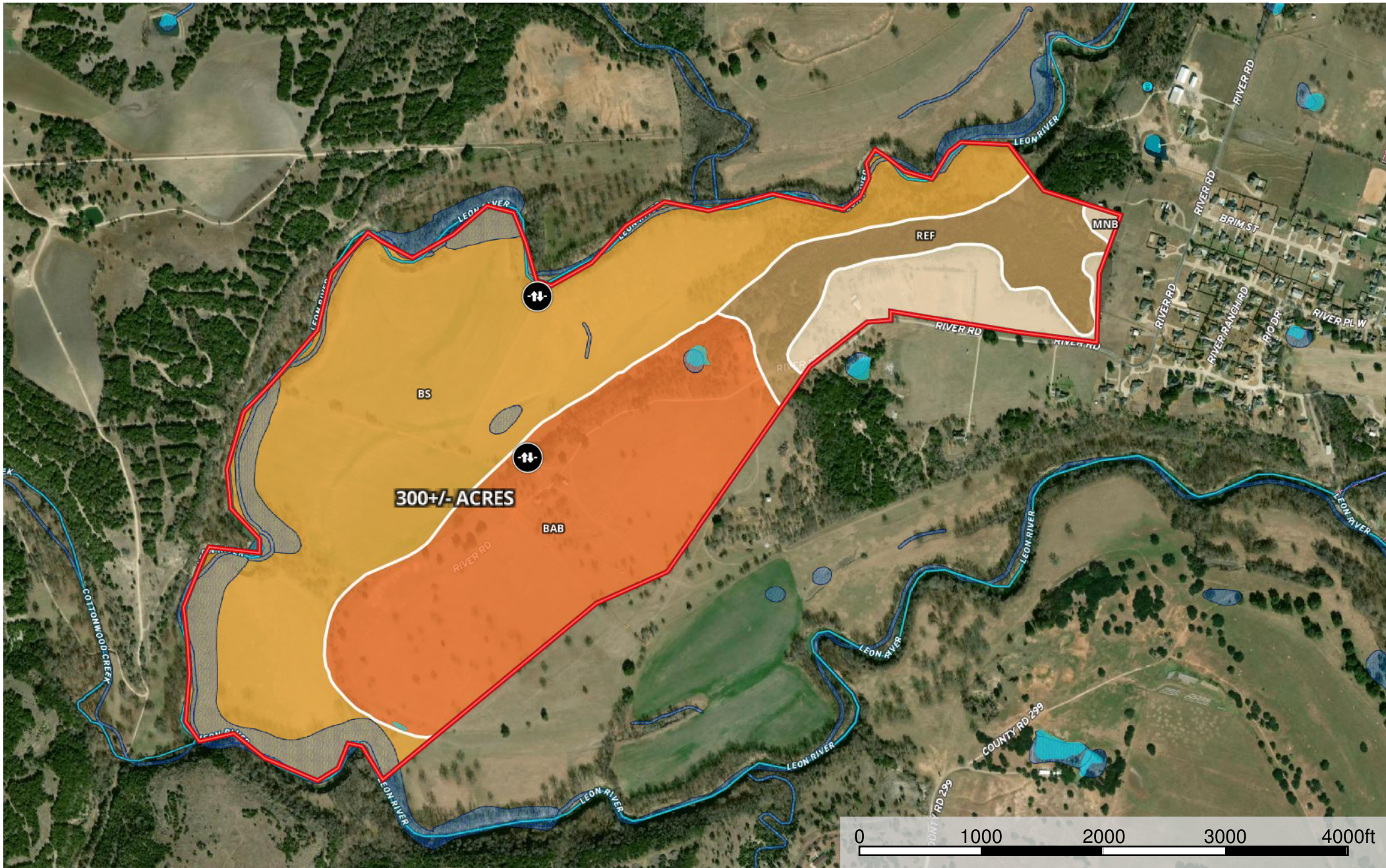


Leifester River Property 300 Acres

Coryell County, Texas, 300 AC +/-



- Gate
- Boundary
- Wetlands
- Riparian
- Stream, Intermittent
- River/Creek
- Water Body
- Water Wells

|  Boundary 310.4 ac









| SOIL CODE | SOIL DESCRIPTION | ACRES | % | CAP |
|-----------|---|-------|-------|-----|
| ReF | Real-Rock outcrop complex, 12 to 40 percent slopes | 27.7 | 8.94 | 8s |
| BaB | Bastil fine sandy loam, 1 to 3 percent slopes | 94.3 | 30.36 | 2e |
| MnB | Minwells fine sandy loam, warm, 1 to 3 percent slopes | 20.4 | 6.56 | 3e |
| Bs | Bosque clay loam, 0 to 1 percent slopes, occasionally flooded | 168.1 | 54.14 | 2w |
| TOTALS | | 310.4 | 100% | 2.6 |

Capability Legend

Increased Limitations and Hazards

Decreased Adaptability and Freedom of Choice Users

Land, Capability

| |  |  |  |  |  |  |  |  |
|--------------|---|---|---|---|--|---|---|---|
| | 1 | 2 | 3 | 4 | 5 | 6 | 7 | 8 |
| 'Wild Life' | • | • | • | • | • | • | • | • |
| Forestry | • | • | • | • | • | • | • | |
| Limited | • | • | • | • | • | • | • | |
| Moderate | • | • | • | • | • | • | | |
| Intense | • | • | • | • | • | | | |
| Limited | • | • | • | • | | | | |
| Moderate | • | • | • | | | | | |
| Intense | • | • | | | | | | |
| Very Intense | • | | | | | | | |

Grazing Cultivation

(c) climatic limitations (e) susceptibility to erosion

(s) soil limitations within the rooting zone (w) excess of water