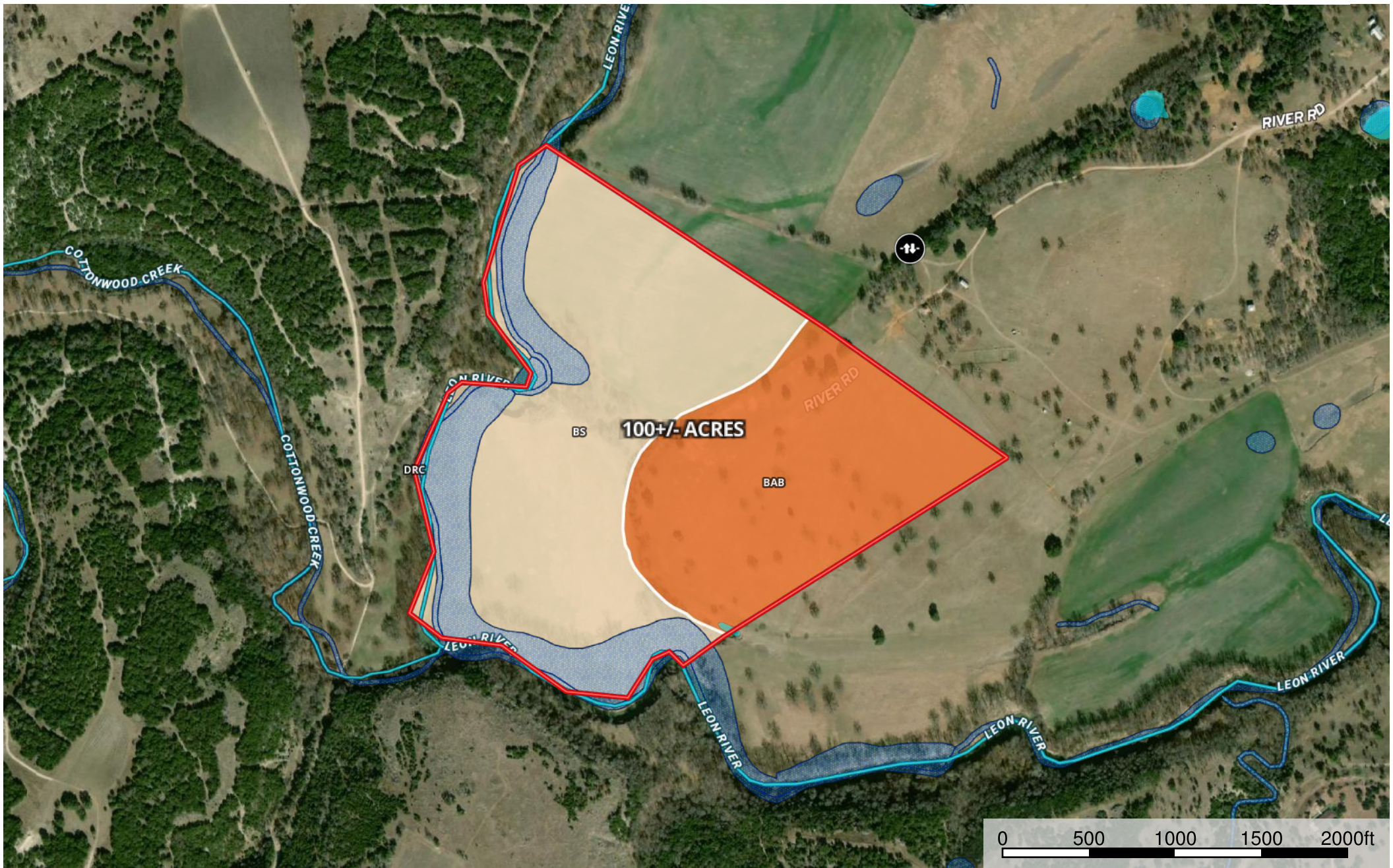


Leifester River Rd 100 Acres

Coryell County, Texas, 100 AC +/-



- Gate
- Boundary
- Wetlands
- Riparian
- Stream, Intermittent
- River/Creek
- Water Body
- Water Wells

Boundary 100.1 ac

SOIL CODE	SOIL DESCRIPTION	ACRES	%	CAP
DrC	Doss-Real complex, 1 to 8 percent slopes	0.0	0.0	6e
BaB	Bastsil fine sandy loam, 1 to 3 percent slopes	36.2	36.19	2e
Bs	Bosque clay loam, 0 to 1 percent slopes, occasionally flooded	63.8	63.81	2w
TOTALS		100.1	100%	2.0

Capability Legend

Increased Limitations and Hazards

Decreased Adaptability and Freedom of Choice Users

Land, Capability

	1	2	3	4	5	6	7	8
'Wild Life'	•	•	•	•	•	•	•	•
Forestry	•	•	•	•	•	•	•	
Limited	•	•	•	•	•	•	•	
Moderate	•	•	•	•	•	•		
Intense	•	•	•	•	•			
Limited	•	•	•	•				
Moderate	•	•	•					
Intense	•	•						
Very Intense	•							

Grazing Cultivation

(c) climatic limitations (e) susceptibility to erosion

(s) soil limitations within the rooting zone (w) excess of water