

THE STATE OF TEXAS

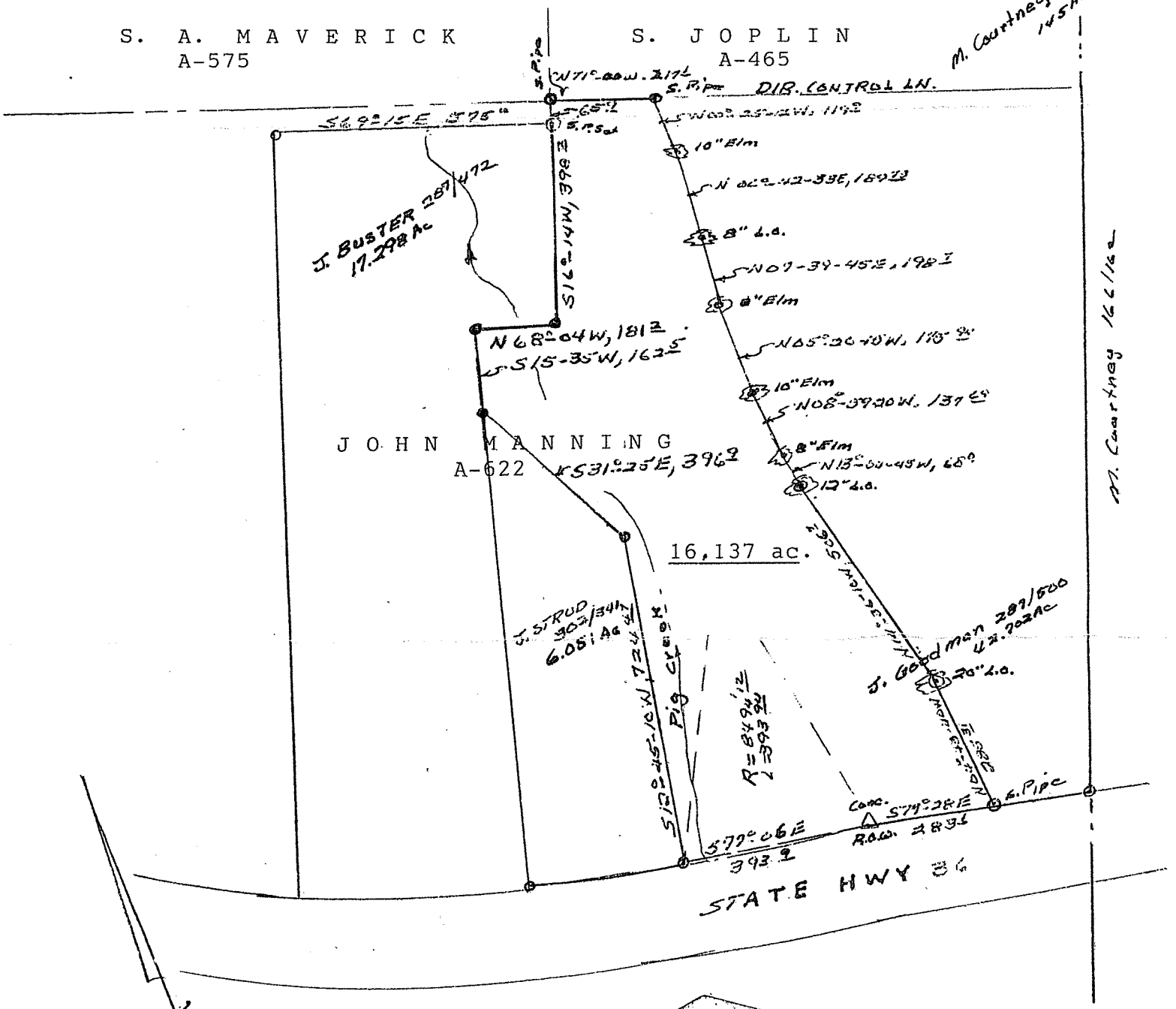
HAMILTON COUNTY

Plat showing survey of 16.137 acres of land out of the John Manning Survey, A-622, Hamilton County, Texas.

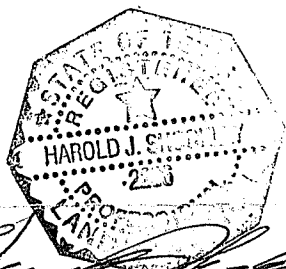
S. A. MAVERICK
A-575

S. JOPLIN
A-465

M. Courtney 166/167
145 Ac



Scale 1"=300'
2 Nov. 1997
0 Steel Pins Fnd.



Harold J. Shockley
Harold J. Shockley
Registered Prof. Land Surveyor
No. 2286 of Texas

STATE OF TEXAS
COUNTY OF HAMILTON
I HEREBY CERTIFY THAT THIS INSTRUMENT WAS FILED
ON THE DATE AND AT THE TIME STAMPED HEREIN BY ME,
AND WAS DULY RECORDED ON 11-14-97 IN THE
REAL PROPERTY RECORDS OF HAMILTON COUNTY, TEXAS, IN
THE VOLUME AND PAGE AS SHOWN HEREON.

FILED FOR RECORD
at 9:20 o'clock A M.



VIRGINIA LOVELL
County Clerk, Hamilton Co., Texas
By: *Virginia Lovell* Deputy

NOV 13 1997

Virginia Lovell
County Clerk, Hamilton Co., Texas

1794 SHOCKLEY ENGINEERING & SURVEYING

OFFICE: 200 S. Rice Ave., Hamilton, Texas 76531
 RES.: Lamkin Route 1, Gustine, Texas 76455
 Office Ph. 817-386-8580 Res. Ph. 817-386-8707

HAROLD J. SHOCKLEY
 Civil Engineer PE 26198
 Prof. Land Surveyor 2286



F I E L D N O T E S

THE STATE OF TEXAS

COUNTY OF HAMILTON

All that certain tract, or parcel of land situated in Hamilton County, Texas and being 16.137 acres of land out of the John W. Manning Survey, A-622 and being a part of that 60 acre tract described in Deed to Jerry D. Goodman per volume 287, page 500 of the Hamilton County Deed Records, said 16.137 acre tract described by metes and bounds as follows:

BEGINNING at a steel pipe for a corner post in the North line of State Highway 36 and being N77-28W, 203.1 feet from the SEC of said 60 acre tract, said pipe the SEC of this,

THENCE along a new wire fence going from tree to tree as follows:
 N04-43-40W, 285.31 feet, a 20 inch Live Oak tree,
 N14-36-10W, 506.7 feet, a 12 inch Live Oak tree,
 N13-04-45W, 68.0 feet, an 8 inch Elm tree,
 N08-59-20W, 137.68 feet, a 10 inch Elm tree,
 N05-20-15W, 175.95 feet, an 8 inch Elm tree,
 N07-39-45W, 198.7 feet, an 8 inch Live Oak tree,
 N06-42-33W, 189.73 feet, a 10 inch Elm tree,
 N00-59-12W, 119.9 feet, a steel pipe for a corner post.
 the NEC of this:

THENCE N71-00W along a new wire fence being generally common with the Manning Survey North line, at 217.1 feet a steel pipe for a corner post, the SEC of the S.A. Maverick Survey, A-575 and the NWC of this:

THENCE S18-45W along fence, at 65.9 feet a steel pin set, a corner post, an interior corner of said 60 acre tract and S16-14W along fence, at 398.1 feet a steel pin found at the base of a corner post, an exterior corner of a 17.298 acre tract severed from said 60 acre tract for Johnny Buster per volume 287, page 472, said Deed Records,

THENCE N68-04W, at 40 feet, crossing a branch, at 181.3 feet a steel pin found at the base of a corner post, an interior corner of said 17.298 acre tract and an exterior corner of this:

THENCE S15-35W along fence, at 162.5 feet a steel pin found, the NWC of a 6.051 acre tract severed from said 60.0 acre tract by survey on 10 September 1997 by the undersigned, said pin an exterior corner of this:

THENCE S31-25E, at 396.9 feet a steel pin set, an interior corner of this:

THENCE S12-45-10W, at 724.47 feet a steel pin set in the North line of State Highway 36, said pin the SEC of said 6.051 and the SWC of this:

THENCE along the arc of a circular curve to the left with curve data as follows:

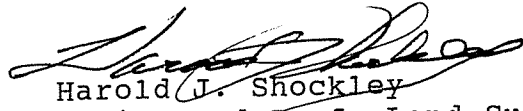
R=8494.12 feet,
 L=393.94 feet,
 Chord S77-06E, 393.9 feet to a concrete R.O.W. monument,
 an external corner of this;

THENCE S77-28E along fence and Highway R.O.W. at 283.1 feet the point of Beginning and containing 16.137 acres of land.

Surveyed: 2 November 1997
For: Jerry Goodman

Rodman: Coman Geye

I, Harold J. Shockley, Registered Professional Land Surveyor of the State of Texas, hereby certify that the foregoing survey was made by me, on this date, on the ground, and that the corners are marked as indicated on the plat attached hereto.



Harold J. Shockley
Registered Prof. Land Surveyor
No. 2286 of Texas

