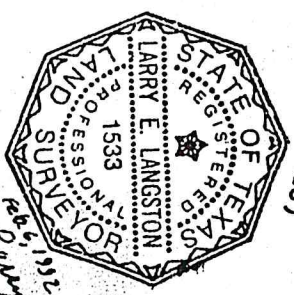
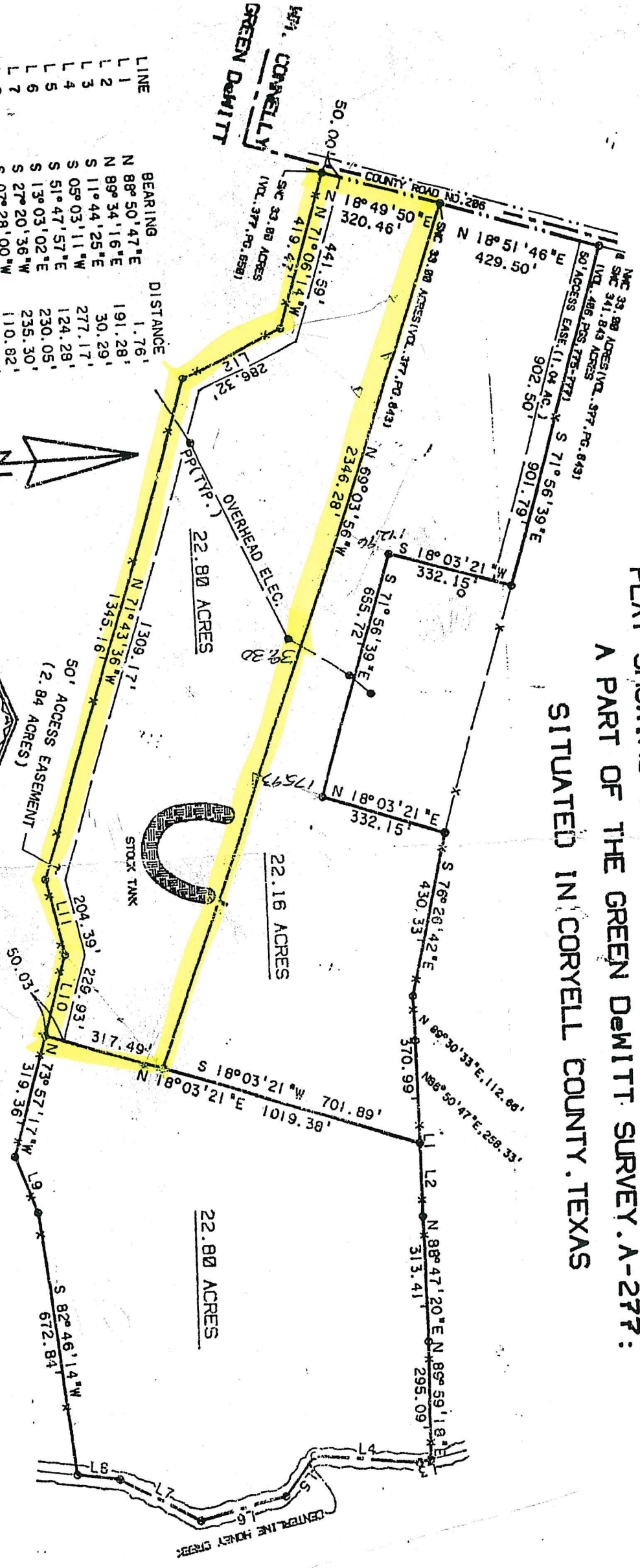


PLAT SHOWING SURVEY AND SUBDIVISION OF 67.76 ACRES,
 A PART OF THE GREEN DEWITT SURVEY, A-277:
 SITUATED IN CORYELL COUNTY, TEXAS

LINE	BEARING	DISTANCE
L 1	N 88° 50' 47" E	1.76'
L 2	N 89° 34' 16" E	191.28'
L 3	S 11° 44' 25" E	30.29'
L 4	S 05° 03' 11" W	277.17'
L 5	S 51° 47' 57" E	124.28'
L 6	S 13° 03' 02" E	230.05'
L 7	S 27° 20' 36" W	235.30'
L 8	S 07° 28' 00" W	110.82'
L 9	S 69° 59' 08" W	161.64'
L 10	N 73° 57' 17" W	215.61'
L 11	S 77° 50' 51" W	205.43'
L 12	N 23° 28' 49" W	286.64'



Larry E. Langston
 1533